

TOP SECRET

*gfh* ■  
HAIR FOR WEAR

Product Range  
Specifications

TOP SECRET®  
Hair Replacement Systems for Men



TOP SECRET®

Hair replacement systems for men

## HAIRPIECES THAT FIT YOUR IMAGE

Founded in 1991, GFH delivers European-wide excellence and quality in the field of hair replacement.

Our TOP SECRET® brand includes a wide range of quality hair systems that are guaranteed to return your hair to its former fullness. Regardless of your hair type, the shape of your head or what type of hair loss you are struggling with, we have the perfect solution for you.

Kind regards

*C. Hoffmeister - Gizzi*

**Cornelia Hoffmeister-Gizzi**  
Managing Director/CEO  
gesellschaft für haarästhetik mbH



INDIVIDUAL  
INNOVATIVE  
SUPERIOR QUALITY



04-07 | **Hairpieces**

Off-the-shelf or customised hairpieces made from sensohair® synthetic fibres or human hair.

08-09 | **Foil-based hairpieces**

Incredible naturalness even up close; full bonding.

10-13 | **Wigs for men**

Excellent wearability. Based on the 3-tone system for a natural colour gradient.

14-15 | **Hair replacement systems**

Order forms, selection aids and colour charts.

16-17 | **A consultation service you can count on**

With advice from our specialists, you will soon have the perfect hair replacement for your needs.

18-19 | **HAIRCARE & MORE**

Hair care and attachment products for hair replacement systems.

# TOP SECRET®

Hair replacement systems for men

## HAIRPIECES

Standard Range  
**sensohair® synthetic fibres**

### Practical and flexible

Our standard range includes a large variety of colours and models for you to choose from – made from human hair or sensohair® synthetic fibres. Every product in our standard range can be ordered from GFH to check out at home – with no obligation to buy.

sensohair® is a modacrylic fibre, a material that has been very popular in the hairpiece market for decades. It is extremely easy to look after, keeps its shape, and is relatively colourfast. It can be reshaped using steam stylers and curling tongs. It should not, however, be exposed to dry heat of over 70° C.



A natural front hairline is the key to undetectable hairpieces! The image above shows the front hairline achieved with SILK MONO.



## SILK MONO

Fine MONO



### sensohair® SYNTHETIC FIBRE STANDARD RANGE

**Specifications:** The new Silk Mono cap is soft and smooth and feels pleasant on the skin. This product was developed in response to customer demands for a naturally light cap and medium hair density. A thin 4-cm-wide PU front in a staggered pattern creates a natural "no-knot" hairline, while the roughly 8-cm-wide PU edge over the back of the head adds stability without bulk.

**Added benefit:** The entire PU area can be reduced and cut to size if needed.

**Size:** 23 cm x 17 cm

**Hair quality:** sensohair®

**Hair direction:** Freestyle parting

**Hair length:** 5–8 cm

**Density:** Light (= 80 %)

**Fine implantation:**

1–2 hairs per knot

**Wave:** Slight (35 mm)

**Colours:** See Colour ring

**Attachment:**

Adhesive tape/strips, clips

## FREESTYLE A/B

MONO



### sensohair® SYNTHETIC FIBRE STANDARD RANGE

**Specifications:** A fine-pore monofilament lends transparency and durability to this proven hairpiece. Thanks to the revolutionary super-front technique, this hairpiece is ideal for freestyle styling. The relatively dense volume makes it perfect for the modern quiff and brushed up hairstyles, while the all-round PU edge guarantees a secure fit. It is no surprise that this has been an all-time favourite for decades!

**Size:** Version A: 22 cm x 16 cm  
Version B: 24 cm x 18 cm

**Hair quality:** sensohair®

**Hair direction:** Freestyle parting

**Hair length:** 6–11 cm

**Density:** Medium (= 100 %)

**Fine implantation**

1–2 hairs per knot

**Wave:** Slight (30 mm)

**Colours:** See Colour ring

**Attachment:**

Adhesive tape/strips, clips

## SUPER PRIMO

Coarse MONO



### sensohair® SYNTHETIC FIBRE STANDARD RANGE

**Specifications:** The base material of this hairpiece is a large-pore, breathable nylon weave which is light and transparent, yet highly robust. A very good all-round hairpiece for more traditional hairstyles with partings. Ideal for customers that are looking for a hairpiece that is breathable but durable at the same time. All-round PU edge for easy and secure attachment.

**Size:** 24 x 18 cm

**Hair quality:** sensohair®

**Hair direction:** Left break

**Hair length:** 7–12 cm

**Density:** Medium-light (= 90 %)

**Wave:** Slight (35 mm)

**Colours:** See Colour ring

**Attachment:**

Adhesive tape/strips, clips

# TOP SECRET®

Hair replacement systems for men

## HAIRPIECES

### Standard Range Human hair

#### 100% natural 100% quality

Only the best will do! Our TOP SECRET® natural-hair hairpieces use high-quality human hair only. Our off-the-shelf models are made from Indian hair with the cuticles removed to prevent tangling.

TOP SECRET® human-hair hairpieces can be treated just like natural hair – they can be worn 24–7, washed with warm water, blow-dried and styled, permed, and so on.

UV rays from the sun affect the colour as they would natural hair, with black and brown shades taking on a hint of red, and blonde turning 2–3 shades lighter, while grey hair may turn yellowish. This can't be prevented but, with it being natural hair, colour rinses, semi-permanent hair dye and similar products can be used to reduce these effects. Contact the GFH team for advice on this.

Note: We also offer top-of-the-range custom hairpieces made from European natural hair.



Lace front:  
All the naturalness of human hair, even close up.  
Model shown here:  
ContactSkin®

## NEW NATURAL

### MONOFILAMENT



#### HUMAN HAIR STANDARD RANGE

**Specifications:** This NEW NATURAL hair-piece features a fine monobase with a thin all-round PU edge, giving your hair natural volume and movement. The thin PU edge does not add bulk and the hair can be styled in a variety of ways.

**Added benefit:** The entire PU area can be reduced and cut to size if needed.

**Size:** 24 x 18 cm

**Hair quality:** Human hair (Indian)

**Hair direction:** Centre crown

**Hair length:** 8–12 cm

**Density:** Medium (= 100 %)

**Fine implantation:** 1–2 hairs per knot

**Wave:** 35 mm (slight natural wave)

**Colours:** See Colour ring

**Attachment:** Any adhesive tape, edge bonding

**Durability:** Around 6 months

## LIBERTY

### LACE



#### HUMAN HAIR STANDARD RANGE

**Specifications:** A new generation of toupees that uses a fully transparent, breathable "lace" net for the base has been launched! LIBERTY has a thin and flexible base with no irritating edges or reinforced areas, allowing it to sit snugly. All the brown shades of this piece have bleached knots, meaning you are free to style your hair as you please – even in a combed back style – without worrying about them being visible. LIBERTY can be altered to any cap size as required.

**Size:** 25 x 19 cm

**Hair quality:** Human hair (Asian)

**Hair direction:** Centre crown

**Hair length:** 12–15 cm

**Density:** Medium-light (= 80 %)

**Wave:** Slight (35 mm)

**Colours:** See Colour ring

**Attachment:** Edge bonding, clips, adhesive strips

**Durability:** 1–3 months

## DERMATEC SOFT

### LACE



#### HUMAN HAIR STANDARD RANGE

**Specifications:** This piece provides added comfort and breathability. The **double layer lace front** is transparent yet durable.

**NEW:** A robust, 2-cm-wide PU edge at the back of the head (from temple to temple) makes it suitable for adhesive attachment.

**Size:** 23,5 x 17 cm

**Hair quality:** Human hair (Indian)

**Hair direction:** Freestyle parting

**Hair length:** 8–12 cm

**Density:** Medium-light (= 80 %)

**Wave:** Slight (35 mm)

**Colours:** See Colour ring

**Attachment:** Edge bonding, adhesive tape, clips, Micropoint bonding, weaving

**Durability:** 3–4 months

# TOP SECRET®

Hair replacement systems for men

## FOIL-BASED HAIRPIECES

### Invisible, secure and unparalleled quality

Demand for foil-based hairpieces has risen sharply in the past 20 years. This is undoubtedly down to the unparalleled level of transparency that this revolutionary technology offers, i.e. human hair is implanted by hand into a more or less transparent membrane. The results are outstanding and incredibly natural, even close up.

Foil-based hairpieces are usually attached using adhesive applied across the entire surface area ("bonding"). This keeps the hairpiece firmly in place, regardless of how active the wearer is, meaning no sports activity is off limits. Furthermore, the ultra-fine foil lets your head breathe, preventing heat build-up. Customers are advised to visit a hair salon specialising in hair replacement care and maintenance every 4 weeks.

**TIP:**

See our separate **ACTIV care product catalogue** for a wide range of medical adhesives for long-wear skin contact applications that can be used by hair professionals and at home.

## ContactSkin®

Thin PU foil, 0.04 mm,  
V-Loop

Standard /  
Customised



### HUMAN HAIR STANDARD RANGE

**Specifications:** ContactSkin® is the ultimate state-of-the-art hair replacement system – a self-adhesive hair-skin foil that is natural, invisible and 100% secure. ContactSkin® takes hair-to-skin adhesion to new levels. It is easy to attach and stays securely in place, fitting as flush and naturally as a contact lens on the eye.

**Size:** 24 x 19 cm

**Hair quality:** Human hair

**Hair direction:** Freestyle

**Hair length:** 15 cm

**Density:**

Medium-light (= 90 %)

Medium (= 100 %)

**Durability:** 4–8 weeks, depending on level of care

**Wave:** Any wave pattern possible

**Colours:** See Colour ring

**Attachment:** Full-head bonding



## AQUA

PU foil, 0.06 mm, knotted,  
V-looped hairline



### HUMAN HAIR STANDARD RANGE

**Specifications:** High-quality, fine foil-based hairpiece that can be cut to size. The thin PU foil is pleasant to touch and seamlessly fits almost any head shape automatically. Knotless V-looped front hairline, guaranteeing a 100% natural look. The rest of the hair is attached to the foil using ultra-fine knots.

**Size:** 24 x 18 cm

**Hair quality:** Human hair (Indian)

**Hair direction:** Centre crown

**Hair length:** 10–15 cm

**Density:** Medium (100 %)

**Durability:** 3–4 months, depending on level of care

**Wave:** Slight (35 mm)

**Colours:** See Colour ring

**Attachment:** Any adhesive method

## HI-TEC (H6)

PU foil, 0.07 mm, injected



### HUMAN HAIR (Indian) STANDARD RANGE

**Specifications:** In this model, the hair is implanted into a thin PU membrane, each hair being individually attached by hand, giving the impression that the hair is sprouting out of the scalp, with no knots or loops. The hair falls like natural hair growth and can be styled any way you like.

**Size:** 24 x 18 cm

**Hair quality:** Human hair (Indian)

**Hair direction:** Freestyle

**Hair length:** 18 cm

**Density:** Light (80 %)

**Durability:** 2–4 months, depending on level of care

**Wave:** Slight

**Colours:** See Colour ring

**Attachment:** Any adhesive method

## HI-TEC *deluxe*

PU foil, 0.07 mm, injected

### HUMAN HAIR (European) STANDARD RANGE

**Size:** 24 x 18 cm

**Hair length:** bis 20 cm

## HI-TEC *deluxe long*

**Hair length:** max. 27 cm

## SKIN LITE

PU foil, gauze reinforced,  
knotted



### CUSTOMISED SOLUTION

**Specifications:** If you are looking for a hairpiece that looks natural but is also durable, this model fits the bill. Its silk-reinforced PU base helps achieve optimum results when knotting the individual hairs into the PU foil. This model is even suitable for use with European hair, which otherwise won't stay in foil-based hairpieces!

**Size:** Made to size (cast based)

#### Hair quality options:

Human hair (Indian, Chinese, European)

**Hair direction:** Any

**Hair length:** Any

**Density:** max. 120 %

**Durability:** 5–8 months, depending on level of care

**Wave:** Any wave pattern

**Colours:** See Colour ring

**Attachment:** Any adhesive method

# TOP SECRET®

Hair replacement systems for men

## WIGS FOR MEN

Full Head Coverage  
**Standard range**

### Hair colours: the 3-tone system for hairpieces and wigs

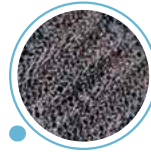
To achieve results that resemble the colour gradient of natural hair, we use what is known as a 3-tone system. In the natural shades this means there is visible gradual lightening (1–2 shades) from the back of the head to the front hairline, while for the grey shades there are different amounts of grey (e.g. the amount of grey around the temples/ at the side of the head is highest).

Each colour code in the TOP SECRET® colour ring is made up of 3 swatches of hair (I, II, III). The colour distribution is shown in the diagrams on page 11.



## MEDI SPORT

Wefted,  
mono crown



### sensohair® SYNTHETIC FIBRE STANDARD RANGE

**Specifications:** A wefted wig with a partial monofilament around the crown area. The result is a short, sporty look and thanks to the lace, the hair can also be styled away from the face. The lace net hairline at the front and the smooth velvet at the temples and neck area make this wig comfortable to wear and provide a soft natural hairline. This wig comes in a natural thickness and length and the elastic band ensures that the wig fits flush around the neck area.

**Size:** 58 cm circumference

**Hair quality:** sensohair® synthetic fibres

**Hair direction:** Freestyle parting

**Hair length:** 5–7 cm

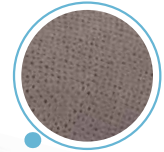
**Density:** Medium

**Wave:** Slight (35 mm)

**Colours:** See Colour ring

## MEDIMAN STRETCH

Silk mono



### HUMAN HAIR STANDARD RANGE

**Specifications:** An extremely high quality, intricately fabricated wig with ultimate comfort and wearability. The delicate all-silk mono base feels super soft on the skin. The lace net hairline makes this wig look natural even close up. Fine, non-bulky bonding points hold the wig securely in place. The 1–2 hair knotting technique lends this model the desired natural lightness.

**Size:** 57 cm (circumference) and XL (59 cm circumference)

**Hair quality:** Human hair

**Hair direction:** Freestyle parting

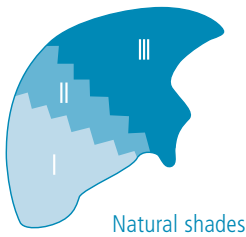
**Hair length:** 4–5 cm

**Density:** Medium-light

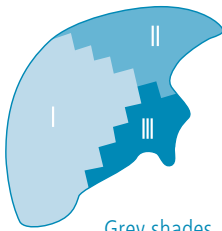
**Wave:** Slight (35 mm)

**Colours:** See Colour ring

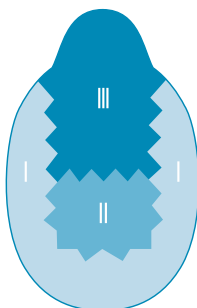
### 3-tone colour gradient



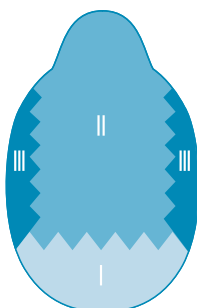
Natural shades



Grey shades



Natural shades



Grey shades



# TOP SECRET®

Hair replacement systems for men

## WIGS FOR MEN

### 100% You

When it comes to wigs, the perfect fit is everything. When ordering one of our custom wigs, which are tailored to your individual needs, head shape, etc., the following two options are available:

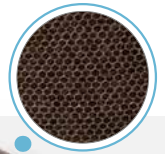
- a) Make a cast of the head of the customer, ideally using AQUACAST (see image on page 14).
- b) Request sample caps from GFH to try. These are available in different sizes and designs.

The average delivery time for a custom wig is 8–10 weeks.

The majority of models can also be fabricated using top of the range European hair, which boasts a unique structure, vibrant colour and naturalness.

## HAIR MED MEN 1

Full lace wig



Customised solutions

### HUMAN HAIR CUSTOMISED SOLUTION

**Specifications:** HAIR MED MEN 1, a full lace wig, is the latest generation of wigs seen on film stars in the US and adapted for everyday use. Lace wigs are made without rigid edge contours and are attached to the scalp using special adhesives. The lace material is invisible to the naked eye, even up close. The wig looks incredibly real from the front, the temples and the sides.

**Size:** Made to size (cast based)

**Choice of hair quality/type:** Human hair (Indian, European, Chinese)

**Hair direction:** Any

**Hair length:** Any

**Density:** Medium to thick (max. 110%)

**Wave:** Any

**Colours:** Based on gfh 3-tone colour ring or hair sample

**Durability:** 3–6 months depending on level of care

**Attachment:** Any adhesive method

## FRENCH TOP MEN

French Top



### HUMAN HAIR CUSTOMISED SOLUTION

**Specifications:** Setting this hand-knotted wig apart is the French Top. A double layer of lace with the knots secured in the lower invisible layer, giving an overall impression of natural hair growth. The effect is incredible! This wig also features a lace front for a soft hairline. The elastic material at the back is soft and guarantees an excellent fit.

**Size:** Cast-based

**Hair quality options:** Human hair (Indian, European, Chinese)

**Hair direction:** Any

**Hair length:** Any

**Density:** Thick (max. 130 %)

**Wave:** Any wave pattern possible

**Colours:** Based on gfh 3-tone colour ring or hair sample

**Durability:** 6–12 months, depending on level on care

**Attachment:** Adhesive strips

## AQUA *complete*

PU foil  
Knotted, front hair injected



### HUMAN HAIR CUSTOMISED SOLUTION

**Specifications:** This PU foil-based wig is a particular favourite with alopecia sufferers. This unbulky solution fits like a second skin, uses no hooks, loops or reinforcements, meaning it doesn't feel as though you are wearing a wig. On request, miniscule ventilation holes can be made in the foil to enable the scalp to breathe better. The hair at the front is injected, while the hair for the other zones is hand knotted.

**Size:** Cast-based

**Hair quality options:** Human hair (Indian, European, Chinese)

**Hair direction:** Any

**Hair length:** Any

**Density:** Medium to thick (max. 110 %)

**Wave:** Any pattern possible

**Colours:** Based on gfh 3-tone colour ring or hair sample

**Durability:** 3–6 months, depending on level of care

**Attachment:** Any adhesive method

## SKIN LITE *complete*

PU foil with gauze  
Knotted



### HUMAN HAIR CUSTOMISED SOLUTION

**Specifications:** This foil-based wig features an added reinforcement in the form of an ultra-thin layer of silk gauze, which makes the wig more durable at no compromise to appearance. Thanks to the silk gauze the knots can be better secured, meaning this wig can even be made from European hair. This model is also available with tiny ventilation holes.

**Size:** Cast-based

**Hair quality options:** Human hair (Indian, European, Chinese)

**Hair direction:** Any

**Hair length:** Any

**Density:** Thick (max. 120 %)

**Wave:** Any wave pattern possible

**Colours:** Based on gfh 3-tone colour ring or hair sample

**Durability:** 4–9 months, depending on level of care

**Attachment:** Any adhesive method

# TOP SECRET®

Hair replacement systems for men

## HAIR REPLACEMENT SYSTEMS

Order forms, selection aids and colour charts

### No solution is out of reach

Just as a tailored suit is made to the customer's needs to provide the perfect fit, here, too, every individual customer's wishes go into the creation of their "dream hair" that is carefully crafted by hand. The benefits of custom-made wigs over off-the-shelf products speak for themselves. We can guarantee the perfect fit, even for unusually shaped heads, and are able to fulfil the customer's wishes in terms of hair length, quality, volume, colour, bonding points, hairstyle, etc.

Thanks to our base sample ring and hair colour ring, you can also see the different options for yourself – before you commit to placing your order.

Come to one of our seminars to find out all you need to know about wigs. Whether you need help finding the right hair replacement solution or filling out the order forms, we are happy to help!



The base sample ring is the ideal way to see all the different options we offer and examine the materials up close.



The grey colour ring shows the different percentages of grey possible.

Toupee-order form

Wig-order form

Info: AQUACAST





TOP SECRET®  
Hair replacement systems for men

# HAIR REPLACEMENT

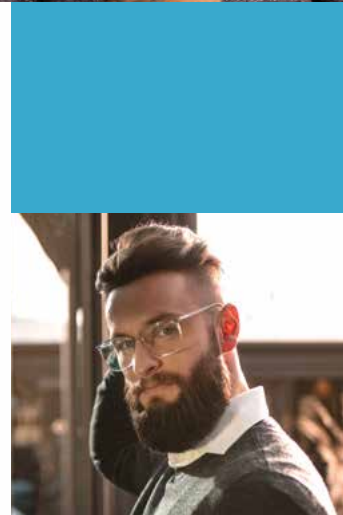
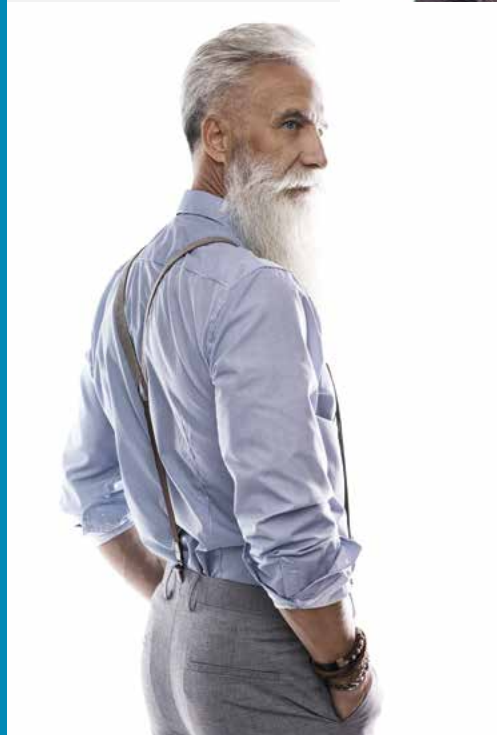
Our qualified  
specialists will help  
you find your perfect  
wig or hairpiece

## Satisfied customers for life

Hair replacement is something many people don't feel comfortable, even ashamed talking about openly. It's hardly surprising that many men really struggle to take the leap and consult an expert in hair replacement. This is why it is even more important to put your customers at ease, show them you understand how they feel.

With a combination of sensitivity and competence, we guide our customers every step of the way, guaranteeing the perfect solution every time. A positive atmosphere creates the trust and openness needed to help your customer navigate his way through the many different options to find the solution that meets his needs best.

**The results speak for themselves – happy customers who, having rediscovered their confidence, come back time and again.**



## 1 | Customer consultation

Always take the time you need. Create a relaxed atmosphere. Try to get the customer talking. Find out what his needs are and what he is looking for. What does he do for work? What hobbies does he have? What is important to him? How far from your salon does he live? Does he have access to transport? Can you gauge what his budget might be? The answers to these questions will help you give your customer more tailored advice.

## 2 | When would I recommend synthetic hair (sensohair®)?

Is easy care important to the customer? Does he find using a hair-dryer and brush tricky? Is he looking to remove his hairpiece at night and quickly and easily reattach it after showering? Is he not willing or able to make regular visits to your hair salon? Is he prone to scalp irritations or dandruff?

If your customer answers yes to these questions, a hair replacement system made from sensohair® (synthetic hair) attached by clips or adhesive strips is probably the right solution for him.

## 3 | What are the benefits of natural hair?

Is the customer looking for a solution that looks natural and feels like human hair? Would he like to blow-dry and style his hairpiece as if it were his own hair? Will he be sleeping in it? If this is the case, the best option is a TOP SECRET® human hair solution.

## 4 | When does European hair come into the equation?

Has your customer said expressly that he is looking for a human hair solution? Does he have other special wishes, too? The hairpiece hair has to have the exact same structure as his natural hair; he wants shine and a natural look; he expects it to still look great and sit right even after months. He has quite a bit of grey or light blonde hair and generally won't settle for second best. If this describes your customer, a custom-made TOP SECRET® solution with European hair is definitely the right choice.

## 5 | When is a removable wig or hairpiece the best option?

Removable products are ideal for customers who are looking for a solution that they can wear as long as possible, who have problems with their scalp and who prefer synthetic hair to human hair.

## 6 | To whom would I recommend permanent hair solutions?

Permanent systems are ideal for customers who are looking for a hair replacement system that is totally reliable regardless of the situation, whether it's day or night, and who don't want to feel like they are wearing a hairpiece. Customers are happy to visit your salon every 4 weeks for a haircare appointment, who have no scalp problems and who don't want the bother of using adhesive strips or the likes.

## 7 | When would I suggest a foil-based solution?

Foil-based systems are the ultimate solution for those with a healthy scalp who want a natural look from a solution that no one would ever know is a hairpiece. For optimum attachment and a reliable, secure fit, we recommend long-lasting adhesive tape (for use at home) or bonding at your trusted hair salon.

## 8 | When is a custom solution best?

As varied as our range of off-the-shelf products is, there will not always be a solution for every bald patch, every shape of head, every hue or length of hair. Here, it comes down to the hair replacement professionals. A professional should be able to provide a custom solution tailored to specific needs with their eyes closed. Please note, hair replacement solutions made from European hair are only available in custom solutions!

## 9 | How to provide the best consultation service to your customers

Sign up for one of GFH's dedicated seminars and workshops (held in Fuerth) and find out all you need to know about wig and hairpiece attachment, cast methods, haircare, techniques, cutting and styling, and so much more. To provide an optimum learning environment, all of our seminars and workshops are for small groups only. Check out our training brochure for details!



# TOP SECRET®

Hair replacement systems for men

## HAIRCARE & MORE

Care and attachment products for hair replacement systems

### High-quality haircare for happy customers

This is just a small selection of the many products that we stock. See our accessories catalogue for details.

Available online at:

[www.gfh-hair.com/haircare-wig-toupee](http://www.gfh-hair.com/haircare-wig-toupee)

Phone orders can be placed at  
**+49 911 974923-0**



^ **ACTIV Beauty Bag**  
This perfect starter set has everything you need. Suitable for synthetic or human hair wigs and hairpieces.



^ **Adhesive applicator brush / sponge** for small areas and edges.



^ **ACTIV Hair Softener**  
For smooth and tangle-free hair. Suitable for human hair hairpieces.



^ **ACTIV Multi Action Keratin**  
For a healthy and smooth shine. Suitable for human hair hairpieces. Now with argan oil.



^ Self-Adhesive Fibreglass Tape  
Reinforced adhesive tape for casts.



^ ACTIV Hair Repair  
Intensive collagen-based hair treatment for human hair.



^ ACTIV TWO-IN-ONE  
2-phase leave-in spray treatment for smoother hair and better structure. Binds colour pigments.

✓ SKIN-PREP protective wipes  
Protect the skin and improve adhesion.



^ ACTIV Silvergloss Shampoo  
Neutralises yellow brassy tones. For grey and white human hair



^ Power Tape  
Waterproof, matt, easy to apply and remove. Attachment for 3–6 weeks.



^ ACTIV Aqua Bond 3  
Adhesive for permanent attachment of hair replacement solutions. Attachment for 3–4 weeks.



✓ Handheld steam styler  
Steam styler for synthetic hair.



^ Scalp Protector  
Transparent protector, prevents irritation, improves attachment duration.



cb-friends.de

Sign up for training now!

2-Day  
Toupee-Seminar  
Details at [www.gfh-hair.com](http://www.gfh-hair.com)



gesellschaft für haarästhetik mbh  
Heinrich-Stranka-Str. 16  
D-90765 Fürth | Germany  
Phone +49 911 974923-0  
fax +49 911 974923-57  
[info@gfh-hair.de](mailto:info@gfh-hair.de)  
[www.gfh-hair.com](http://www.gfh-hair.com)

12/2020